



Beaufort County Public Works
Stormwater Infrastructure
Project Summary

Project Summary: Albertha Fields Circle

Project #: 2011-532

Completed: Nov-10

Narrative Description of Project:

Project improved 2,140 L.F. of drainage system. Cleaned out 2,140 L.F. of outfall ditch. Jetted (1) crossline pipe.

Material Cost, Rental Equipment Summary, and Labor

Material	Unit	Cost/Unit	Qty	Cost
Pin Flag	each	\$0.06	23.0	\$1.38
Water	gallon	\$0.01	200.0	\$2.00
Diesel	gallon	\$2.63	194.0	\$510.22
Gas	gallon	\$2.50	9.0	\$22.50
Labor	hours		145.0	\$3,224.21
Indirect Labor, Services, and Supplies				\$2,258.05
Total Cost of Materials, Rental Equip., and Labor				\$6,018.36

Note: Labor cost includes the employee's salary plus fringe benefits.

Equipment Cost

Item	Asset	Cost/Hour	Hrs.	Cost
Volvo 290 Excavator	22870	\$54.13	10.0	\$541.30
Vacuum Truck	22812	\$22.16	2.0	\$44.32
Lowboy	23118	\$34.64	4.0	\$138.56
Dump Trucks		\$13.31	36.0	\$479.16
Pickup Trucks		\$4.12	36.0	\$148.32
Total Equipment Cost				\$1,351.66

Cost/hour excludes fuel cost.

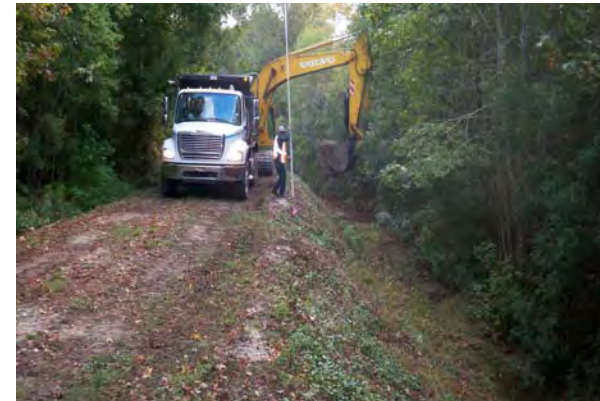
Total Cost: \$7,370.02

Site Photographs

Before



During



After



Project: Albertha
Fields Circle

Activity: Drainage
Maintenance

Project #:
2011-532

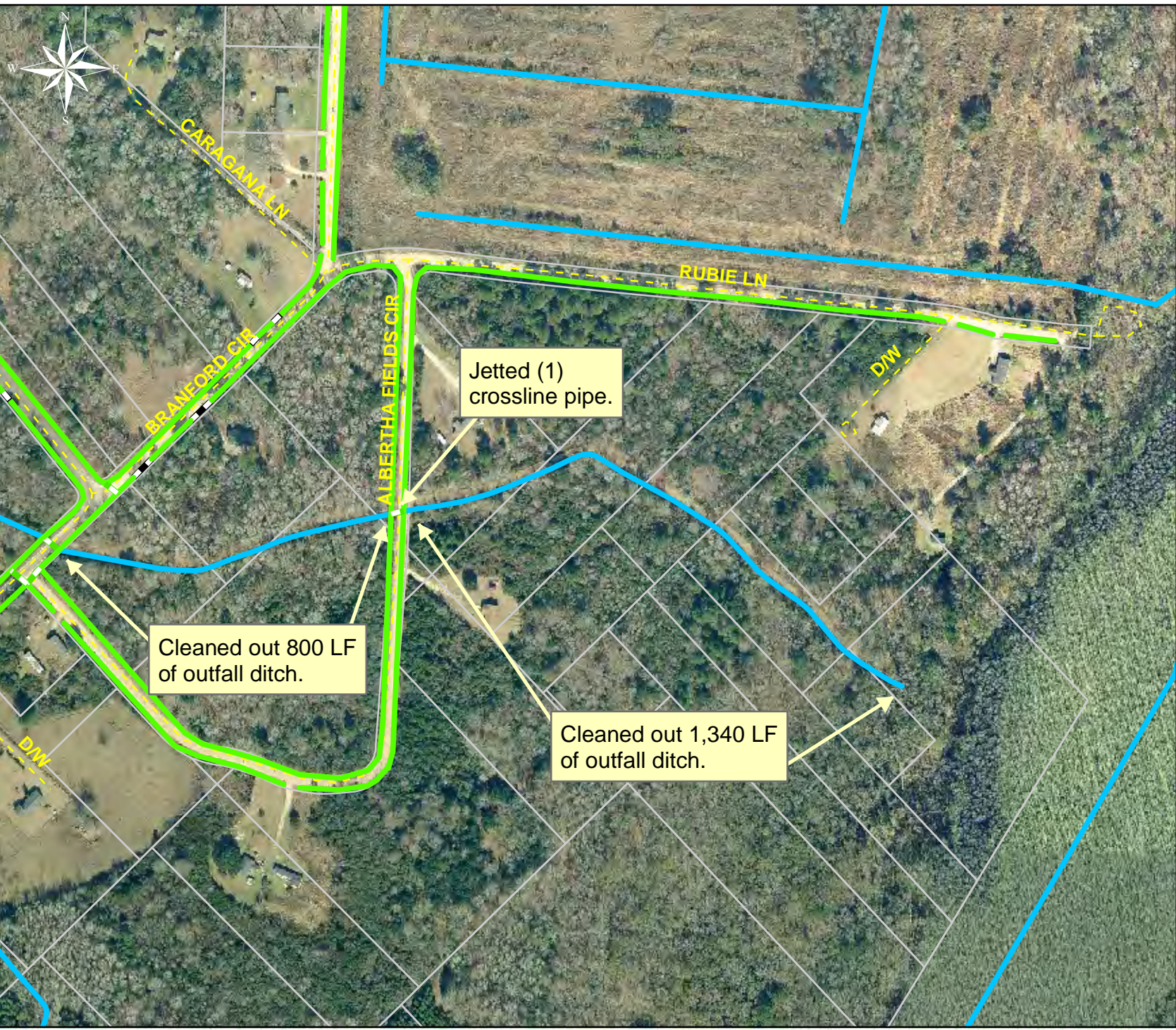
Township:
Sheldon

Completed:
November 2010

Legend

Drainage Type

- River
- Stream
- Outfall
- Lateral
- Lateral Pipe
- Roadside
- Roadside Pipe
- Crossline
- D/W
- Access
- Piped
- Bleeder
- Parcels



1 inch = 312 feet